

OUTSWING DOOR INSTALLATION INSTRUCTIONS
BGD

Remove nail fin

shim @ screw location
jamb only

locate screws:
6" from top and bottom, and
equally space (3) more.

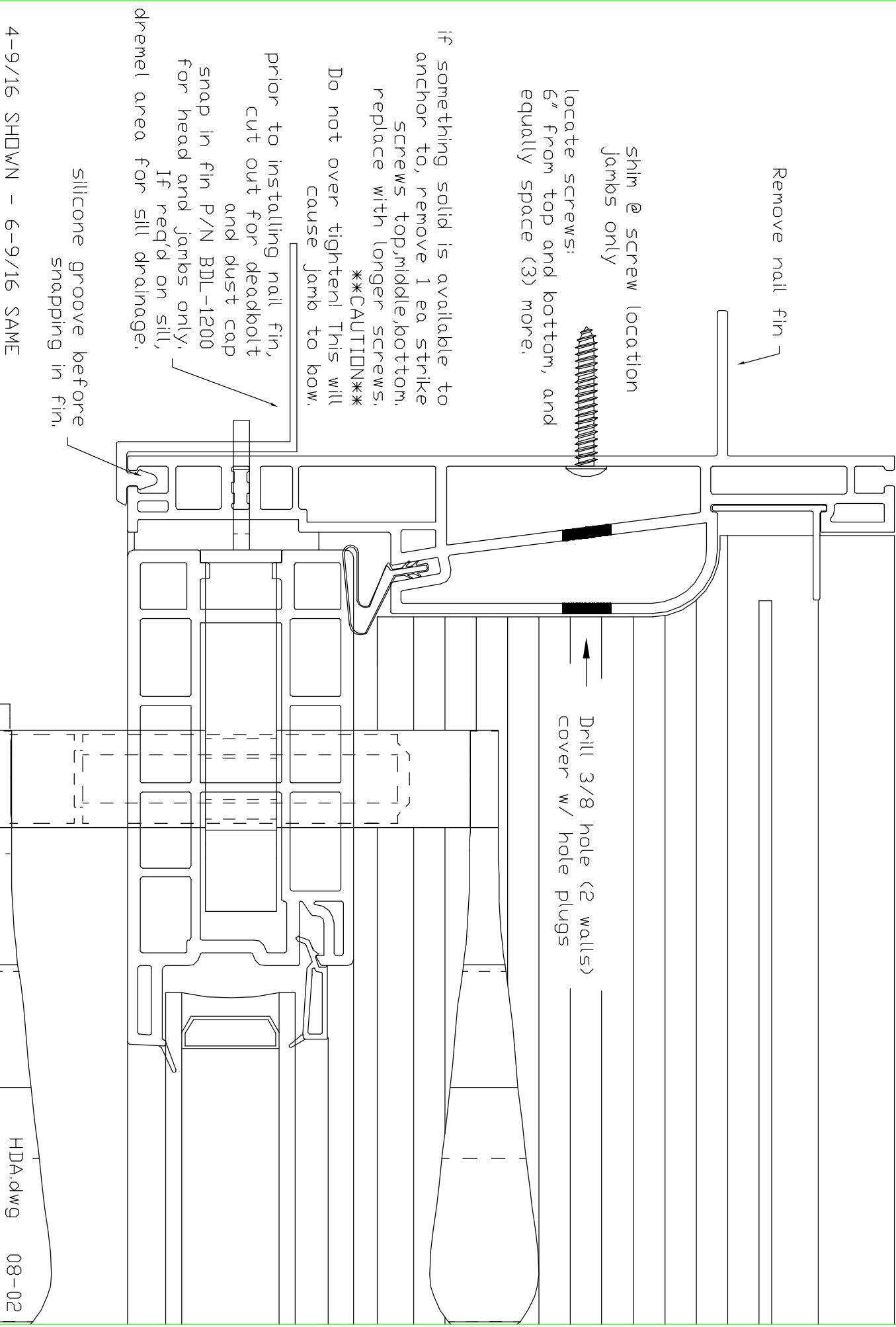
if something solid is available to
anchor to, remove 1 ea. strike
screws top,middle,bottom.
replace with longer screws.

CAUTION
Do not over tighten! This will
cause jamb to bow.

prior to installing nail fin,
cut out for deadbolt
and dust cap
snap in fin P/N BDL-1200
for head and jamb only.
If req'd on sill,
dremel area for sill drainage.

silicone groove before
snapping in fin.

Drill 3/8 hole (2 walls)
cover w/ hole plugs



4-9/16 SHOWN - 6-9/16 SAME